

# CentraDesign

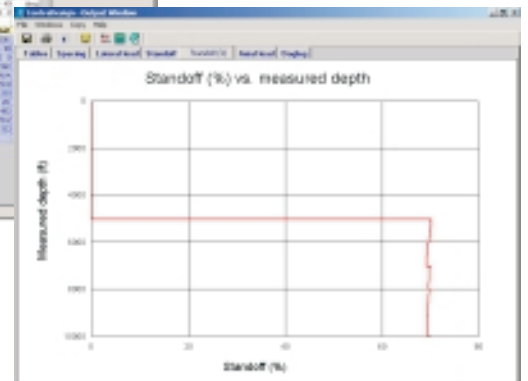
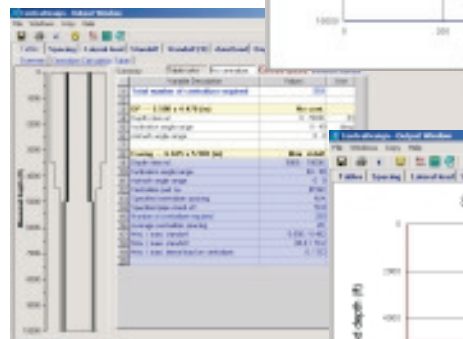
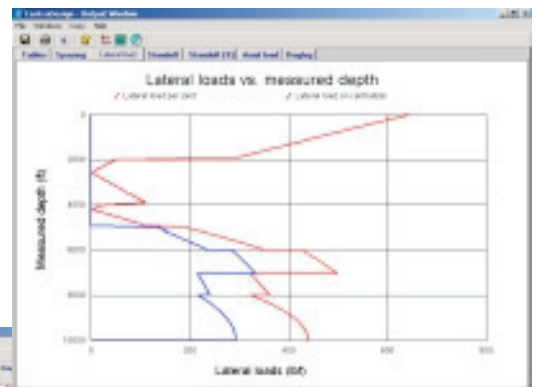
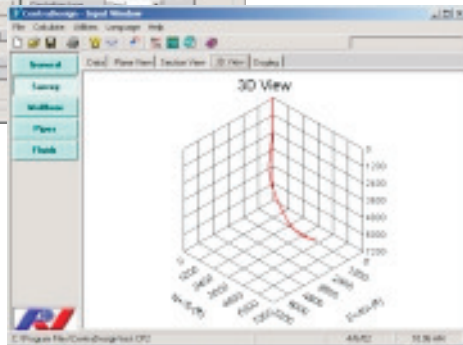
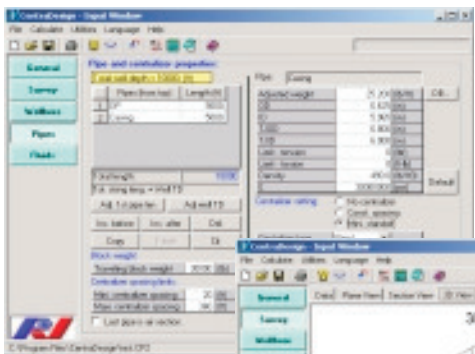
## Centralizer Application Model

One of the most important factors in obtaining a good primary cement job is a proper placement of casing centralizers. Computer modeling has helped to decide the minimum number of centralizers, determine their optimum placement, and calculate maximum casing standoff.

SpidleTurbeco has licensed CentraDesign developed by Pegasus Ventures, to aid in the design of bow spring and/or rigid centralizer placement.

### Engineering Features:

- 3D wellbore
- Casing deflection and centralizer compression
- Latest casing bending models
- Constant spacing or minimum stand-off designs
- 20 sections of pipes and 20 wellbore intervals
- For each pipe, user can specify:
  - (1) no centralizer
  - (2) constant spacing design
  - (3) minimum stand-off design
- Combination of spring-bow and rigid centralizers
- Includes one-span casing analyses
- Extensive tubular database included
- Lateral forces on centralizers and joint
- Automatically export results into MS Word.
- Allows oil field, SI and customized units



### ORDER INFORMATION

To have a spacing program run for your well, please contact our engineers in the Houston office at the following listings:

Office: 713-466-0072  
Fax: 713-896-4511  
Email: [direland@flotekind.com](mailto:direland@flotekind.com)  
Email: [rwittman@flotekind.com](mailto:rwittman@flotekind.com)  
Website: [www.flotekind.com](http://www.flotekind.com)