

ROLLER REAMERS

TWO BODY TYPES

Spidle Turbeco offers both 3 point and 6 point roller reamers. These bodies are available in a string or nearbit configuration. By combining the bodies with the four roller types, a wide variety of reamers can be assembled from a small inventory.



3-POINT BOTTOM HOLE REAMER

Eliminates back-to-bottom reaming with a new bit.



3-POINT STRING REAMER

Reams out dog-legs, key seats and ledges in a hole



6-POINT BOTTOM HOLE REAMER

Provides more reaming and stabilization capacity than 3-point design. Prevents sharp changes in hole angle when running packed hole.

ORDERING INFORMATION

When ordering, please specify:

- Three or six point configurations
- String or near-bit
- Hole Size
- Roller cutter type
- Fishing neck diameter
- Size and type of upper and lower connections (Example: 4 ½' if box up X 4 ½' REG. box down.)

REPLACEMENT PARTS

When ordering, please specify:

- Bearing blocks: size and letter
- Bearing pins: size
- Secondary locking bolts: size
- Cross pins size
- Fishing neck diameter
- Roller cutters: size and type (medium or hard formation). Set of three includes bearing pins and cross pins.

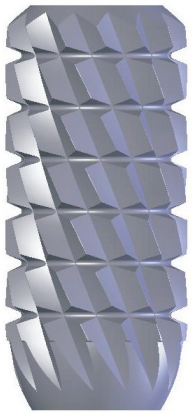
SPIDLE TURBECO Roller Reamers are simple, yet dependable.

There's a reamer to match your drilling condition

The basic **Spidle Turbeco** roller reamer is designed to be used when drilling straight or highly deviated holes. There are models available for air or mud drilling. By simply specifying the proper roller cutters, any **Spidle Turbeco** reamer can be used in soft, medium or hard formations.

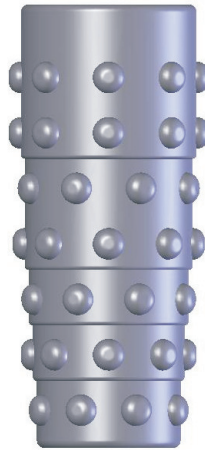
Four Types of Rollers Available

Field replaceable roller cutters are designed to let you adapt the reamer to the specific formation you are facing. **Spidle Turbeco** cutters are designed to eliminate drag or sliding of the formation across the cutter face, thus extending the cutter life. The vertical cutter will not "screw" up or down in the hole, which allows the driller to observe true bit weights.



SOFT (SHALE-TYPE) CUTTER

For use in soft formations having low compression strength and high drillability, like soft lime and shale. This roller's teeth are hardened, carburized, quenched and tempered for maximum life.



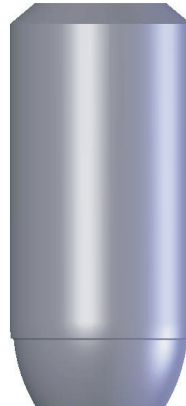
HARD (ROCK-TYPE) CUTTER

Applicable in hard, extra-hard, abrasive and semi-abrasive formations, like hard sand, chert or granite. This button cutter features tungsten carbide compacts which act as teeth and fracture the formation. Bearing surfaces are specially treated for long cutter life. This roller cutter is recommended for air and gas drilling.



MEDIUM (CHERT-TYPE) CUTTER

Use in medium to medium-hard formations with high compressive strength like dolomite, hard lime and chert, where a crushing action is required. Teeth are carburized and ground to gauge. Grooves on the face of the teeth are hardfaced. Due to the increased area of wall contact, this cutter is recommended for string reamer application as a stabilizer.



SMOOTH ROLLER

Used in directional drilling for low torque stabilization, without cutting. This roller is hardened and carburized.